

ERRATA

G.Hennen, G.Maghuin-Rogister, G.Mamoir, The subunits of bovine thyrotropin. Their isolation and comparison with the subunits of luteinizing hormone, FEBS Letters 9 (1) (1970) 20–26.

p. 23, column 2, line 6

For: teins (fig. 2). The common patterns between the maps

Read: teins (fig. 2). That some points of similarity exist between the maps

p. 22, table 1, line 6 should read:

LH 0.1 M potassium chloride 33,000

8 M Urea was not present in the buffer for LH in the molecular weight determination giving 33,000.

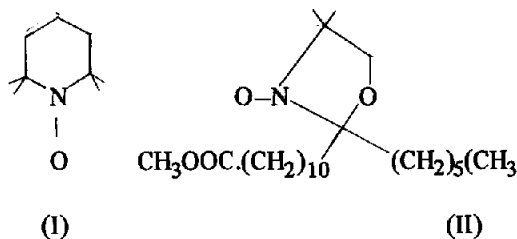
W.K.Baumann, S.A.Bizzozero, H.Dutler, Specificity of α -chymotrypsin. Dipeptide substrates, FEBS Letters 8 (1970) 257–260.

In the title, for α -chymotrypsin, read: α -chymotrypsin

Pages 258 and 259 were printed in the wrong order.

G.H.Dodd, M.D.Barratt, L.Rayner, Spin probes for binding site polarity, FEBS Letters 8 (1970) 286–292.

p. 286, the formulae should be as follows:



(I) and (II) were omitted.

W.E.Hornby, H.Filippusson, A.McDonald, The preparation of glucose oxidase chemically attached to polystyrene and its use in the automated analyses of glucose, FEBS Letters 9 (1) (1970) 8–10.

p. 9, The legends to figs. 1 and 2 have been reversed.